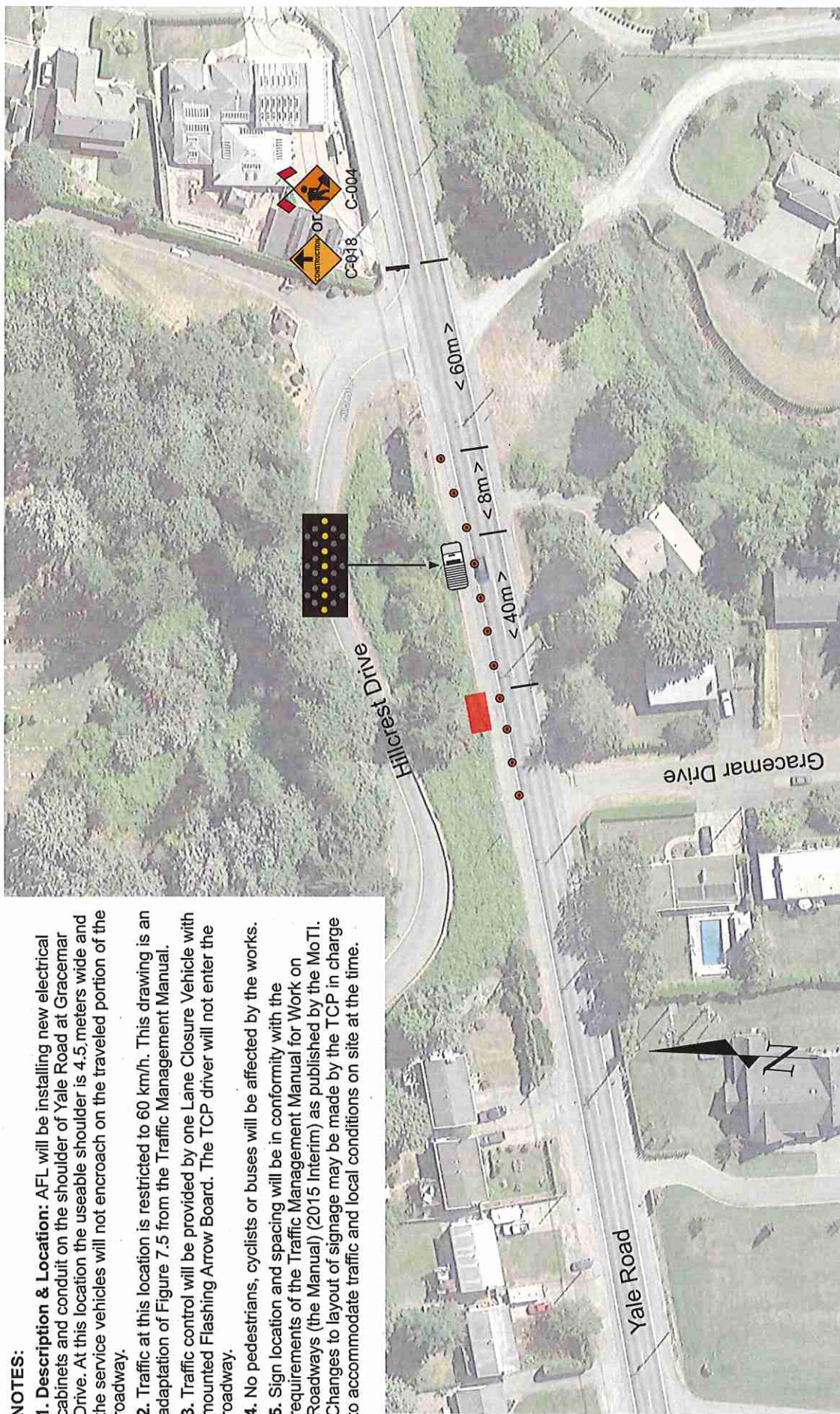


**NOTES:**

1. **Description & Location:** AFL will be installing new electrical cabinets and conduit on the shoulder of Yale Road at Gracemar Drive. At this location the useable shoulder is 4.5 meters wide and the service vehicles will not encroach on the traveled portion of the roadway.
2. Traffic at this location is restricted to 60 km/h. This drawing is an adaptation of Figure 7.5 from the Traffic Management Manual.
3. Traffic control will be provided by one Lane Closure Vehicle with mounted Flashing Arrow Board. The TCP driver will not enter the roadway.
4. No pedestrians, cyclists or buses will be affected by the works.
5. Sign location and spacing will be in conformity with the requirements of the Traffic Management Manual for Work on Roadways (the Manual) (2015 Interim) as published by the MoTI. Changes to layout of signage may be made by the TCP in charge to accommodate traffic and local conditions on site at the time.



	<b>Ansan Industries Ltd.</b> 2600 Viking Way, Richmond, British Columbia V6V 1N2	
	Customer: <b>AFL Construction Services</b>	Contact: <b>Kelly Buchanan</b> Tel: <b>250-485-7330</b>
No: <b>17-1097-01</b>	Date: <b>4 April 2017</b>	Title: <b>Cabinet and Conduit Installation - CLWK 2081A-2611563</b> Yale Road at Gracemar Drive Chilliwack, British Columbia
Traffic Tech: <b>Flynn Marr</b>		Dwg By: <b>R. Flynn Marr B.Sc.(Eng)</b>
File: <b>Plan 17-1097-01.cdr</b>		

**LEGEND**

- TRAFFIC CONTROL PERSON
- WORK AREA
- TRAFFIC CONE TYPE 'D'
- TRAFFIC SIGN LOCATION
- LANE CLOSURE TRUCK
- TRUCK MOUNTED FAB
- TRAFFIC FLOW
- OVERHEAD CABLE

This Traffic Plan has been prepared by Ansan Industries Ltd. (Ansan) based, in part, on information provided by third parties. Every effort has been made to ensure that the plan conforms to the requirements of the Motor Vehicle Act (RSBC 1966) Chapter 318 and Regulations and to the BC Traffic Control Manual. Ansan assumes no responsibility for the uses to which this plan is put by third parties not directly under the supervision of Ansan or its agents.